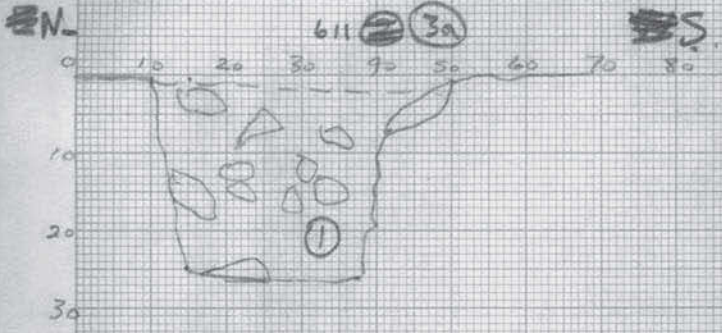




- 659 ? PH cut into 603 (5).
- 660 ? PH W of 647, next to s. baulk. Had tree at higher level.
- 661 Patch of burnt stones NE of 613: within 604 (2).
- 662 Small circular patch of 'mud' - shown up by rain on 24-4-72.
- 663 Area of disturbed angular stones bonded by dark soil. Sealed by 611 (3b). [663 (1) = dark soil, sampled 28-7-72].
- 664 Ditto: abutts F.612. [664 (1) dark brown soil, sampled 28-7-72]
- 665 Ditto, but maybe S. wards continuation of 613.
- 666 ? PH; N. of 647. Sealed by W ward equivalent of 611 (3a).
- 667 ? PH, W of 612. Sealed by 611 (3a).
- 668 Tree disturbance N. of 644.
- 669 Disturbed patch: some burnt stones.
- 670 PH at N. end 663. Sealed by 611 (3a)
- 671 ~~PH~~ PH W. of 612 Sealed by 611 (3a)?
- 672 Circular feature adjacent to 668: PH or tree hole?

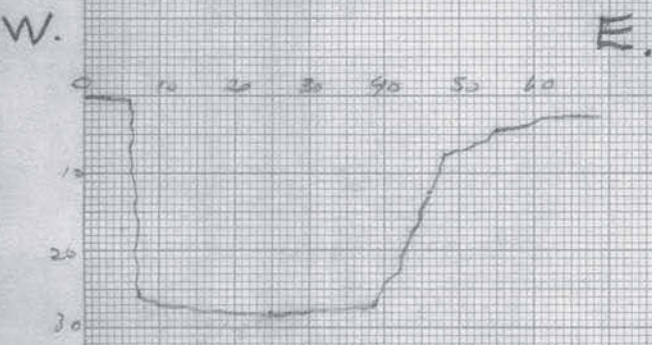
F. 671 POST HOLE

28-7-72



INFILL: Brown soil + small rounded + angular stones up to 7cm diam/length. Some burnt-like stones. Sampled.

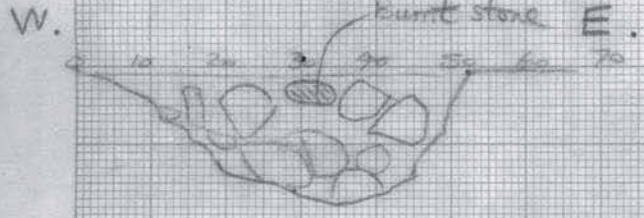
EMPTY SECTION



NB Possibly a double ph.

F. 673

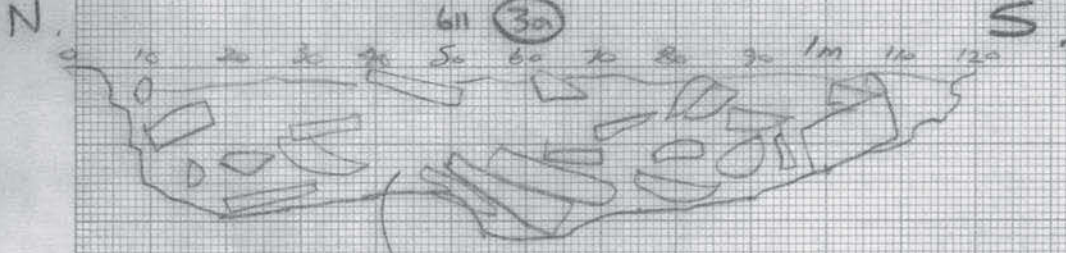
28-7-72



INFILL: small stones with brown soil. 611 (3a)

F. 665 DISTURBED DEPRESSION

28-7-72



INFILL: Brown soil + loose ragstone