

✓870

Stake hole <sup>TJ</sup> in 601

✓871

" " " "

✓872

" " " " (double)

✓873

" " " "

● 874

" " along siltation fissure, w. of 606

✓875

" " w. of 697

✓876

Group of thin vertical stones 40cm NW of 636.

✓877

Wattle hole / Stake hole ?

878

Large P.H. below PH 615 & sealed by 629

● 879

Large PH below 629, N. of 615. Burnt stones showing above 629 ∴ contemp. with hearth ?

880

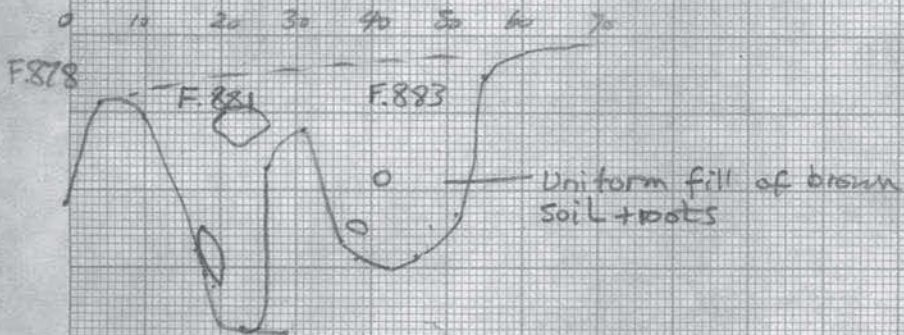
Small PH: burnt stones; sealed by 629?  
(burnt stones visible through 629: cf AR's plan)

881

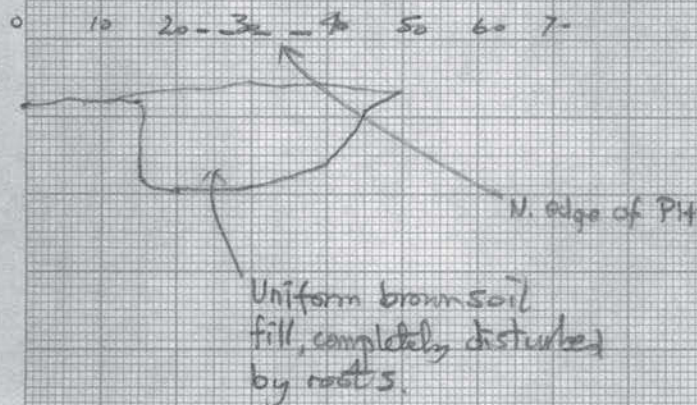
~~PH~~ PH E of 878 Relationship with 629 not clear.

F.881, F.883

12-8-72



F.884



F.698 SHALLOW DEPRESSION

13-8-72

