

8.8.75 Continued trial trench extending F2020. Removing leached grit. Area of small burned stones revealed 10 cms below top of level (4)

F1937

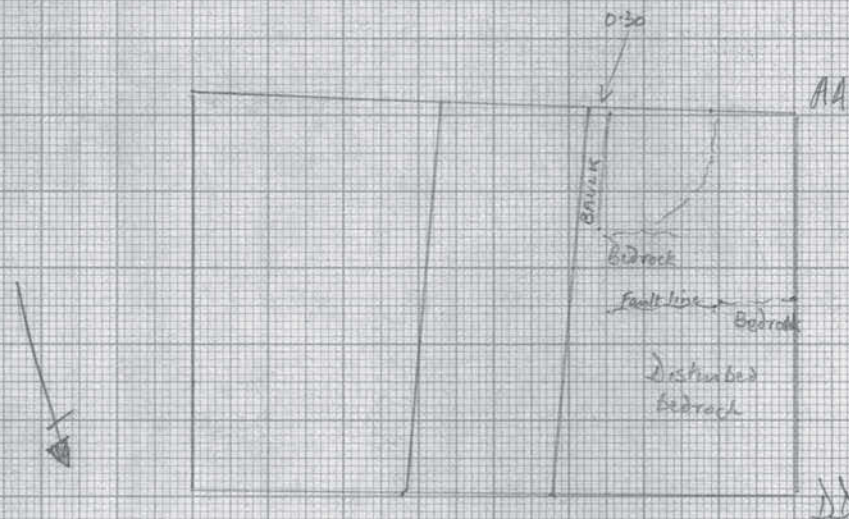
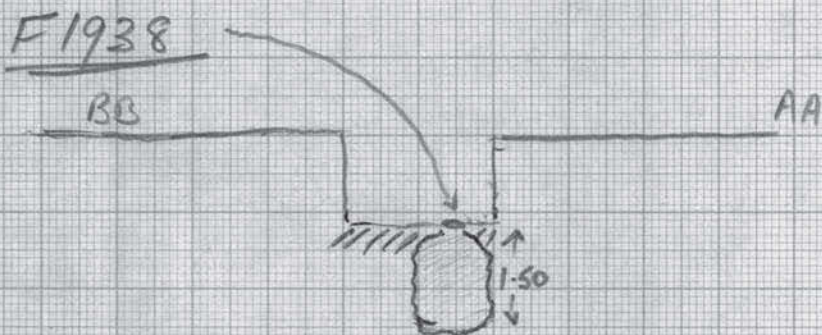
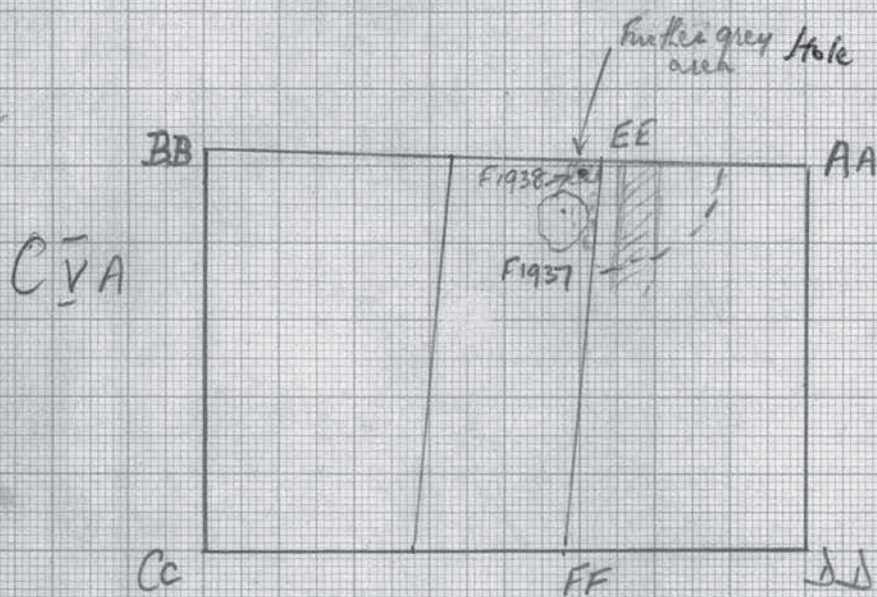
AA. 3.10	BB. 4.97
AA. 3.65	BB. 4.43
AA. 3.70	BB. 4.80
AA. 3.22	BB. 5.19
separate area	
AA. 4.70	BB. 4.00

Continued to remove leached grit. Below feature 1937 soil continues to be much more grey than in neighbouring areas. Took soil sample at about 75 cms.

9.8.75 Picking out pit (2020) Further very dark patch, possibly ash nearer to point EE. See sketch opposite (above)
Trowelling hatched area to try to define edge of ditch. More animal bone at level (3). Also flint & pot.

F1938 Further digging revealed small hole in same area. F1938
from AA 3.35 towards BB. 24 cms from line. Depth of ~~top~~ hole from turf 1.17. Depth of very large apparently natural hole 1.50m See sketch opposite.

Area between EE & AA trowelled and picked to reveal extent of ditch. May be defined as outlined in upper sketch. Leaving 30 cm bank. See bottom sketch.



Measurements of areas of bedrock

①	AA	2.40	DD
②	AA	2.75	DD
③	AA	3.60	DD