

CH 86

CONTEXT F 7316

CUTTING F 15 CO-ORDINATES: East 6.2 North 3.8

DATE EXPOSED 19/7/86 DATE COMPLETED

DESCRIPTION Area of small vertical stone on the surface resembles a hearth setting but the stones are unburnt. A small area of burning occurs W & E of the upright stones.

MAX. WIDTH AND DIRECTION 0.15m NW-SE

MAX. LENGTH AND DIRECTION 0.4m NE-SW

MAX. DEPTH/HEIGHT THICKNESS 0.08m

OVERLIES 7350

OVERLAIN BY ~~7350~~ 7301

CUTS 7323

CUT BY

ABUTS OR CONTIGUOUS WITH

PLANS No. 2 SECTIONS No. See over

PHOTO: B/W COL. NEG. NOS.

SAMPLE Type: Nos.

EXCAVATOR

RECORDER DRN

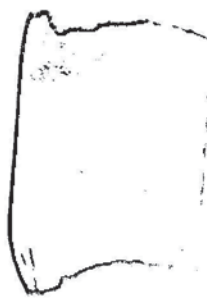
ASSOCIATED FEATURES

ASSOCIATED FINDS

COMMENT The sectioning of this feature showed that the burning was scattered & generally no deeper than 1-2 cms.

Removing of the N. side of the feature repeated this pattern of burning. The line of pitched stones was 1 stone deep sitting in a slight depression in 7350, no indication of a deliberately cut 'trough' for their insertion.

PHASING



H86 F7316 Section SW Facing
Sq FtS 1:10 1/8/86 Return 1DBH.

6.09mE 3.80mW
NW

6.48mN-3.28mN.
SE

