

CH 86

CONTEXT **F** 7389

CUTTING *F15* CO-ORDINATES: East *5.7* North *12.4*

DATE EXPOSED *17/8/86* DATE COMPLETED *18/8/86*

DESCRIPTION *PA. Edge cut by 7351 - pitched stone. No burning*

MAX. WIDTH AND DIRECTION *0.3m E-W*

MAX. LENGTH AND DIRECTION *0.5m N-S*

MAX. DEPTH/HEIGHT THICKNESS *0.35m*

OVERLIES

OVERLAIN BY *7323*

CUTS *BR 7350*

CUT BY *7351*

ABUTS OR CONTIGUOUS WITH

PLANS No. *3 Fenton* SECTIONS No. *See over*

PHOTO: B/W COL. NEG. NOS.

SAMPLE Type: Nos.

EXCAVATOR *Margo*

RECORDER *DBH*

ASSOCIATED FEATURES

ASSOCIATED FINDS *Pot Bank*

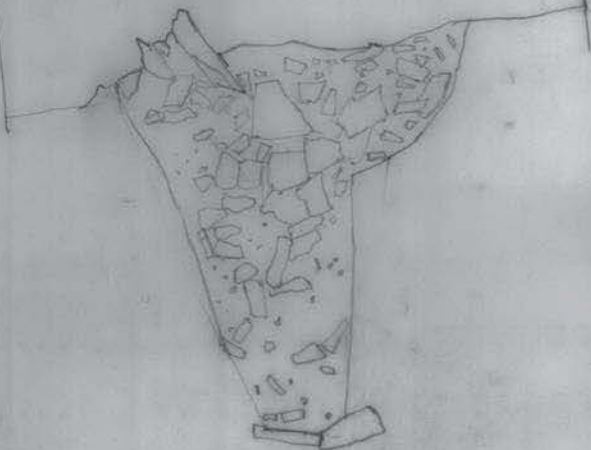
COMMENT

PHASING

CH36 18/8/82 F15 F7389 1:10

S
5.48m E
1.86m N

N
5.63m E
2.66m N



2 of 2

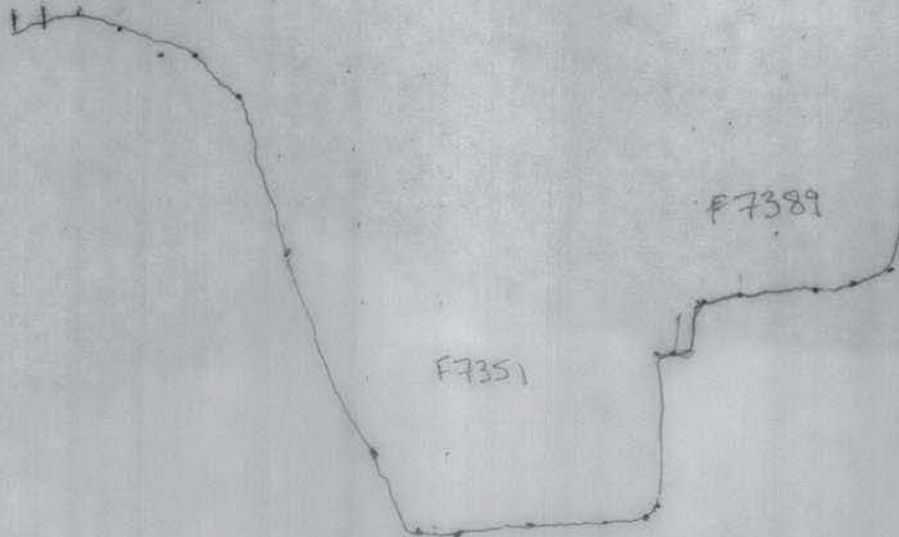
F 7389

CUTTING
F15

CH 86
F7389
7351
Sq. F 15
MARCO
18.8.86

6.36E
2.30N

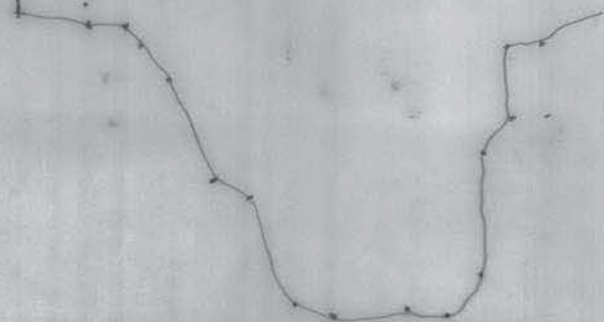
10 20 30 40 50 60 70 80 90 100 10 20



5.35E
2.60N

10 20 30 40 50 60

5.46E
1.84N



F7389