

CH86

CONTEXT F 7405

CUTTING ..... CO-ORDINATES: East 9.0 North 7.0

DATE EXPOSED 24/8/86 DATE COMPLETED .....

DESCRIPTION Dark brown soil with many medium stones, all of which are  
loosely set, infrequent burnt stones etc. etc.

MAX. WIDTH AND DIRECTION 1.0m N-S

MAX. LENGTH AND DIRECTION 4.8m E-W

MAX. DEPTH/HEIGHT THICKNESS 0.25m max

OVERLIES 7409, 7400, 7410, 7408

OVERLAIN BY 7346-7352 ramped bank ~~etc.~~

CUTS .....

CUT BY .....

ABUTS OR CONTIGUOUS WITH .....

PLANS No. See notes SECTIONS No. See notes

PHOTO: B/W ..... COL. .... NEG. NOS. ....

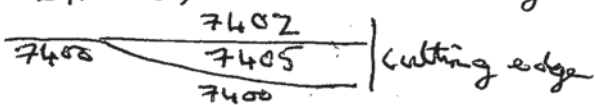
SAMPLE Type: ..... Nos. ....

EXCAVATOR Vince, Simon, Margie, JD, Nizki  
at the GLOS Row. RECORDER DBH

ASSOCIATED FEATURES 7626

ASSOCIATED FINDS Ring Heeled pin \* Pot Largest Bone Tooth

COMMENT 7401 is the N side of this but with much less soil.  
Forms a band running along G17's Southern edge  
(Bends out 'around' 7411)  
Extends into CH82 cutting & into F17 as 7626.



PHASING \* This lay almost horizontally with a large slab across the top of it

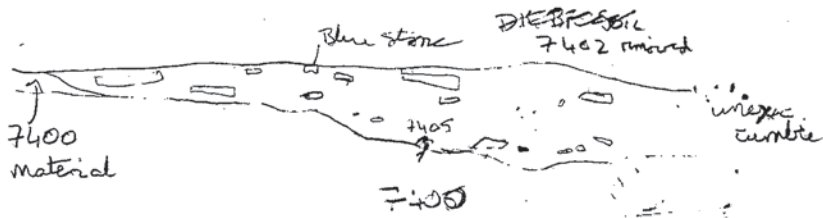
Section thro' 7405 110 27/8/86

N 128ME

1 770mN

G17

6958m N  
S 9.72mE



	N	E
Edge	730	880
	6.60	2.40.