

CH 86

CONTEXT **F** 7382.....

CUTTING G15 CO-ORDINATES: East..... 88 North..... 27

DATE EXPOSED 11/8/86 DATE COMPLETED 16/8/86

DESCRIPTION *Area of chippel - red brown soil - a few very small stones*
Numbered to separate the area from 7378.

MAX. WIDTH AND DIRECTION 0.8 m E-W

MAX. LENGTH AND DIRECTION 0.7 m N-S

MAX. DEPTH/HEIGHT THICKNESS

OVERLIES

OVERLAIN BY 7339 7374

CUTS *cut*

CUT BY

ABUTS OR CONTIGUOUS WITH

PLANS No. *Feature* SECTIONS No. 1 & 2 G15

PHOTO: B/W COL. NEG. NOS.

SAMPLE Type: Nos.

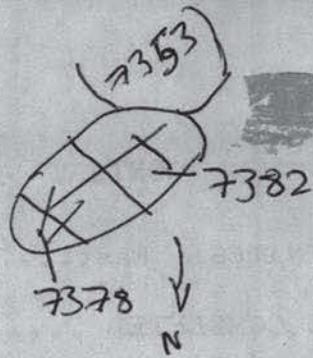
EXCAVATOR *Peter*
*Phetip*RECORDER *DBH*

ASSOCIATED FEATURES

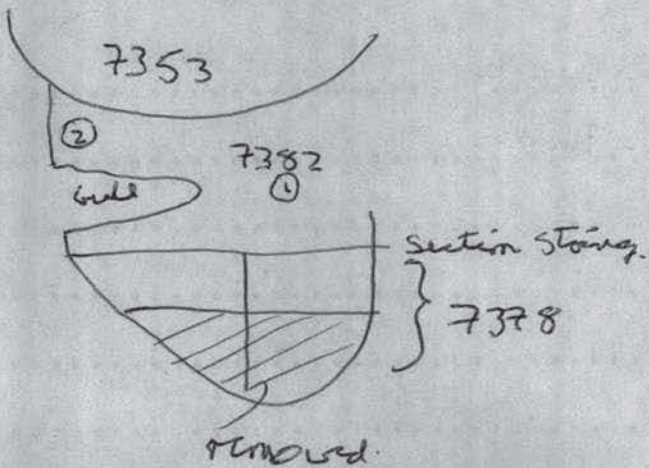
ASSOCIATED FINDS

COMMENT *Extensive disturbance by rabbits as shown by runs*
Pres Natural + animal disturbance

PHASING

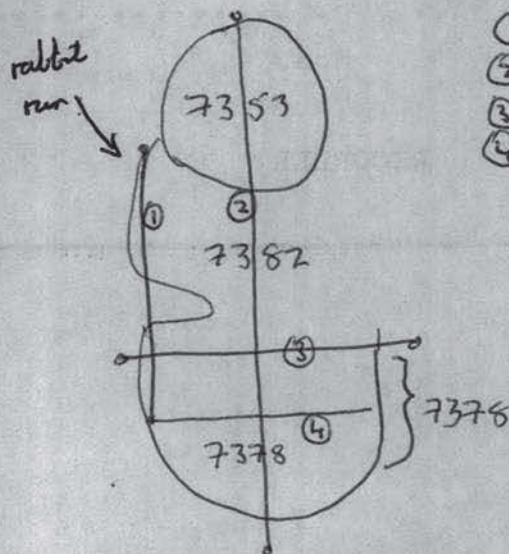


on further end.



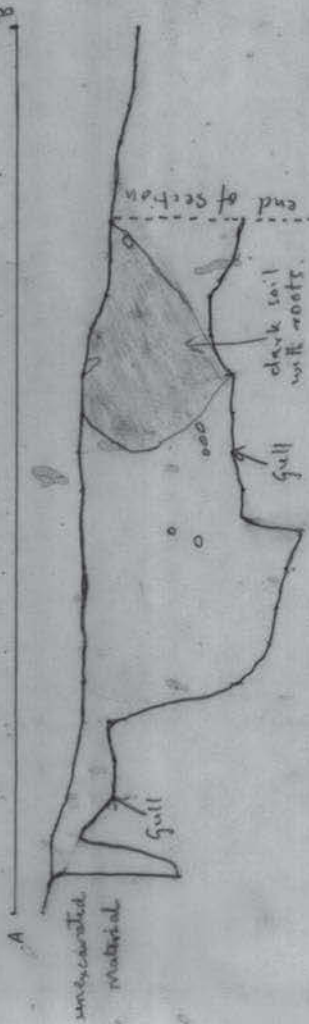
7382 ② for length between outcrop of gull & 7353 edge

Sections drawn.



- ① Section 1
- ② Section 2
- ③ Section 7378 by Emm & Bennett
- ④ " 7375 " " Campbell.

Section 1



Scale 1:10

Section 2

Full reddish-brown clay pit
Dark soil associated with the reddish brown
7382
No burning present

CH 86

Square G-15
Feature 7382
A = 9.35 E 2.41 N
B = 8.69 E 1.50 N

P.L. Teed

12.8.86

7382

F7378
See bottom of page 2

F7353

Gull

F7378

Gull

Page 2
7353

Scale 1:10

The fill of 7378 & 7382 is identical, different numbers were used to identify finds & samples. On the surface 7378 appeared as a poor P.M. & was excavated as such.
No burning present

CH 86

Square G-15
Features 7382/7378
A = 8.15 E 1.67 N
B = 9.61 E 3.60 N

P.L. Teed

12.8.86