

CH

CONTEXT **F** ..7244....

CUTTING ..... G16 ..... CO-ORDINATES: East. 3:30. North. 0:60.

DATE EXPOSED ..... 6.8 ..... DATE COMPLETED ..... 12.8 .....

DESCRIPTION *Roughly circular depression in 7211 with two large stones on w. edge and several medium-sized stones in centre and on n.e. edge*

MAX. WIDTH AND DIRECTION ..... 50 cm S/N ..... Posthole: 54 cm diam. ....

MAX. LENGTH AND DIRECTION ..... 70 cm W/E .....

MAX. DEPTH/HEIGHT THICKNESS ..... Posthole: 61 cm (incl. c. 30 cm 7211/7289 material) .....

OVERLIES ..... Bedrock .....

OVERLAIN BY ..... 7289, 7259, 7211 .....

CUTS ..... Bedrock, 7289 etc. ....

CUT BY .....

ABUTS OR CONTIGUOUS WITH .....

PLANS No. 3. FEATURE ..... SECTIONS No. ..... See over  
PROFILE ..... See over

PHOTO: B/W ..... COL. .... NEG. NOS. ....

SAMPLE Type: SNAIL, SOIL & CHEM. ..... Nos. 203, 207, 209, 213, 220, 232, 233,  
LAYERS 1+2 ..... 236, 248, 249, 292, 295, 296, 299, 305,  
315, 316, 325, 339, 340, 345, 349.EXCAVATOR *Joanne*RECORDER *DRW.*

ASSOCIATED FEATURES 7242, 7710, 7416

ASSOCIATED FINDS *charcoal, pot, alien stone, bone, burnt bones, iron (at c. 19-cm)*COMMENT *Possible posthole — definite (12.8)  
Difficult to find edges because actual hole overlain by c. 30 cm of 7211/7289 material. Lumpy bedrock edges below this and flat bottom of flat concreted stones.*PHASING *1.9 N. edges disintegrated at 7712, which seemed to run out just in. of 7244 was being removed. Flat stones continued n. under 7712 towards 7719.**One of the postholes of the four-poster.  
? Earlier I. A.*

10/8  
F7244  
G16  
1:10  
602

3.55E  
0.63N

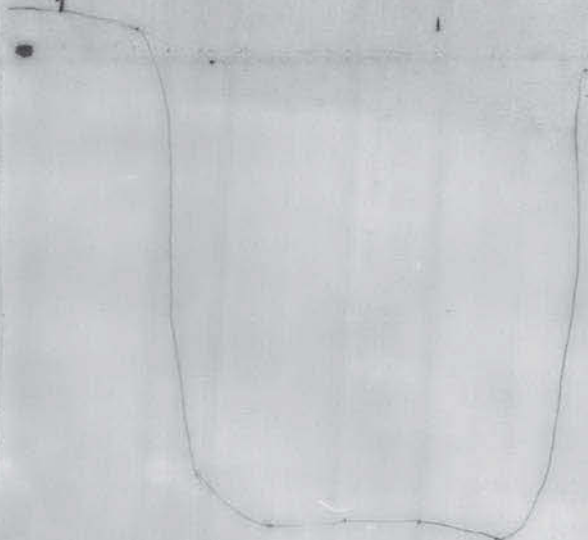
4.40E  
0.70N  
+



0.439E  
0.66N  
0.1

0.5  
1

3.55E  
0.78N  
1



Andrea  
Trenton  
CH 86 G16 Prof. 12/11/86  
F7244