

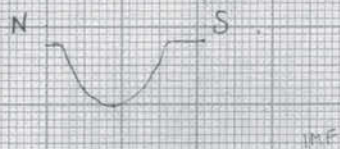
TV

## Features 1974.

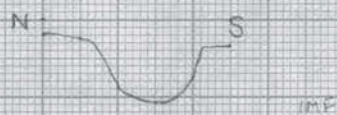
- F1600 : shallow pit in N end of G5 on line with G4.
- F1601 : shallow post/pit on line between G6 & H6; connected with F1604.
- F1602 : posthole, connected with no structures in G5.
- F1603 : very large posthole linked with F1607, G5.
- F1604 : shallow post/pit on line G5/H5.
- F1605 : post hole in G5
- F1606 : post hole in G6 on excavation proved negative!
- F1607 : large post hole connected with F1603 on line G5/H5
- F1608 : remains of crucible in J5.
- F1609 : intersection of F1604 & F1607. F1604 is earlier feature and is cut by F1607.
- F1610 : posthole in North of H5.
- F1611 : posthole in West of H5.
- F1612 : stake-hole to north of F1610 in H5.
- F1613 : posthole in gull in H5.
- F1614 : stakehole in gull in H5
- F1615 : stakehole in gull in H5.
- F1616 : posthole in G5; connected with F1606, F1605.
- F1617 : stakehole in ~~G5~~ J5; in gull
- F1618 : stakehole in H5 in gull
- F1619 : stakehole (double?) in J5 in gull
- F1620 : posthole in G5; associated with F1611, F1603, F1607
- F1621 : posthole in G6; associated with F1606, F1605, F1608.
- F1622 : ~~posthole in J5; associated with F1613.~~



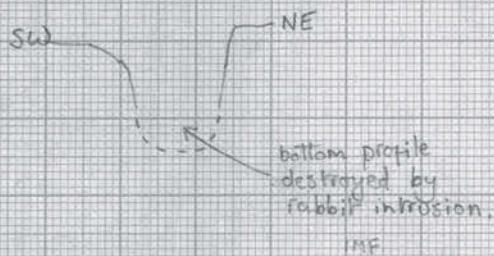
F 1614 Profile 1:10



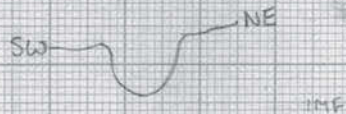
F 1615 Profile 1:10



F 1617 Profile 1:10



F 1618 Profile 1:10



F 1619 Profile 1:10

