

CH 88

LAYER ①

CONTEXT F 8505

CUTTING ..... P2 ..... CO-ORDINATES: East... 10... North... 90...

DATE EXPOSED ... 18.7.88 ..... DATE COMPLETED .....

DESCRIPTION

Area in NW corner of cutting of very many very small stones and some medium sized ones. Many on edge. orange brown v. fine sandy silt Matrix

MAX. WIDTH AND DIRECTION ..... 1.60 m SW - NE .....

MAX. LENGTH AND DIRECTION ..... 2.00 m SE - NW .....

MAX. DEPTH/HEIGHT THICKNESS ..... 0.15 m ..... whole feature 0.35 m

OVERLIES ..... LAYER ② LAYER ③ .....

OVERLAIN BY ..... 8169 8171 8173 .....

CUTS ..... 8514? 8171? .....

CUT BY ..... 8506 8507 .....

ABUTS OR CONTIGUOUS WITH ..... 8506 8507 .....

PLANS No. .... 3, 3d ..... SECTIONS No. .... ① SW - NE ② SE - NW 3J

PHOTO: B/W ..... COL. .... NEG. NOS. ....

SAMPLE Type: ..... Nos. ....

EXCAVATOR JAVET

RECORDER TIM

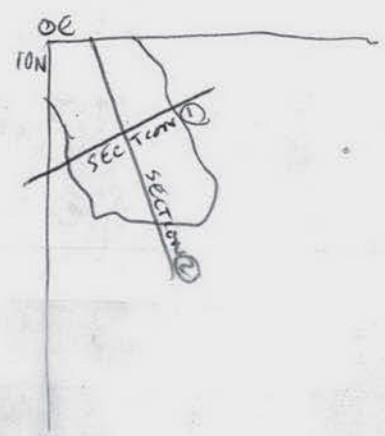
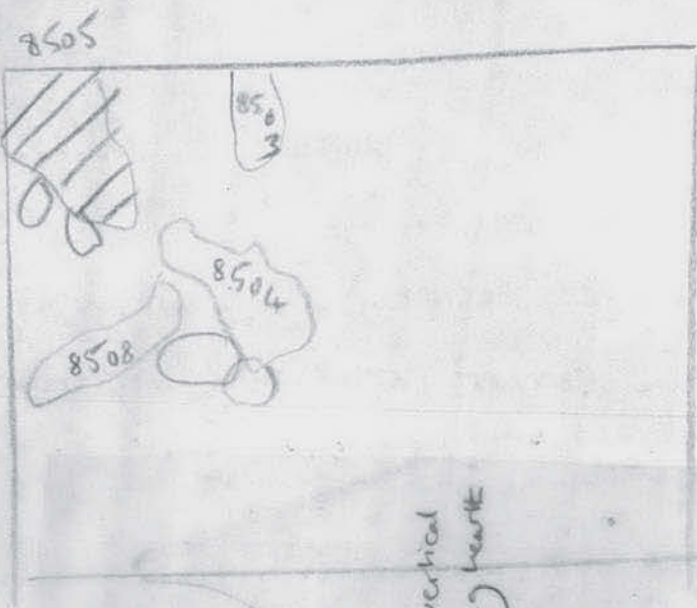
ASSOCIATED FEATURES

ASSOCIATED FINDS Pot, bone, L.A.S Limestone

COMMENT Pro Sketch plan Only NE quadrant not fully excavated  
 dug by quadrant method, with running sections SE-NW. SW-NE.  
 From section evidence it looks as though 8506 + 8507 were cut into

PHASING 8505  
 Aug 88 having removed SE+NW quadrants down 15cm, the SW+NE quadrants were removed 7cm and then planned (see Plan 3d) — possibly  
 8506 has a continuation northwards at this level and then a turn to the east at 45N, containing small burnt stones of 8505  
 Could this be a "wall" around the hearth 8173? and 8174.





31st July 1978

CH 1978

PLAN  
D2 / 3 G

Possible "wall" of vertical  
stones surrounding heart  
8173/8505

*MF*

SKETCH APPROX 1:20



ION  
OE



CH

CONTEXT **F** 8505 Layer 2

CUTTING ... **P2** ..... CO-ORDINATES: East... **72°12'** North... **72° 90'**

DATE EXPOSED **23.7.88** ..... DATE COMPLETED **2.8.88** .....

DESCRIPTION **Medium sized stones with much red colouring from burning, jumbled**

MAX. WIDTH AND DIRECTION ..... **0.50m W-E** .....

MAX. LENGTH AND DIRECTION ..... **1.00m N-S** .....

MAX. DEPTH/HEIGHT THICKNESS ..... **0.05-0.10 m** .....

OVERLIES ..... **Layer (3)** and 8533 .....

OVERLAIN BY ..... **LAYER (1)** .....

CUTS .....

CUT BY .....

ABUTS OR CONTIGUOUS WITH .....

PLANS No. **3G** ..... SECTIONS No. **3F, 3G, 3H, 3I, 3J, 3B, 3C** .....

PHOTO: B/W ..... COL. .... NEG. NOS. ....

SAMPLE Type: ..... Nos. ....

EXCAVATOR **Dave Janet**

RECORDER **Tim**

ASSOCIATED FEATURES

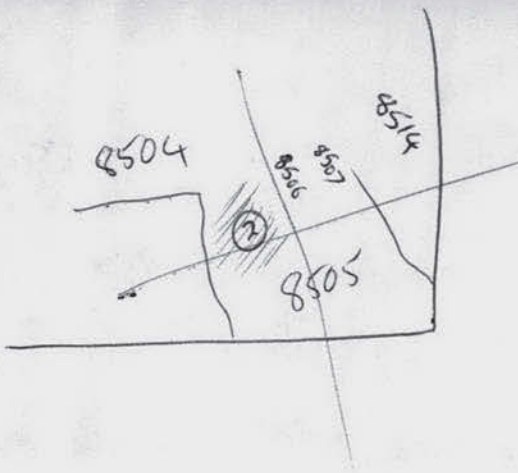
ASSOCIATED FINDS **Probably Calcite GLASS!! Pot, unshell flint, blue Lias stone**

COMMENT **Pro Sketch**

**A pocket of burnt stones set in hollowed into 8505 Layer (3) and sealed by 8505 (1).**

PHASING

22





CH 88

CONTEXT F 8505<sup>layer</sup> ③

CUTTING P2 CO-ORDINATES: East 1.0 North 9.0

DATE EXPOSED 3.8.88 DATE COMPLETED

DESCRIPTION

orange brown sandy silt with medium sized  
stones set at various angles within it, many  
verticals or on edge  
begins at 15cm below top of 8505

MAX. WIDTH AND DIRECTION

MAX. LENGTH AND DIRECTION

MAX. DEPTH/HEIGHT THICKNESS 0.30m

OVERLIES Bedrock

OVERLAIN BY 8505 ① ②

CUTS

CUT BY

ABUTS OR CONTIGUOUS WITH

PLANS No. 3K SECTIONS No. 8505 ① ② 3F, 3G, 3H, 3I

PHOTO: B/W COL. NEG. NOS.

SAMPLE Type: Nos.

EXCAVATOR Javel

RECORDER Tim

ASSOCIATED FEATURES

ASSOCIATED FINDS

COMMENT

Throughout excavation of this layer NE quadrant has  
been quite fruitful of finds and burnt bits of stone; in  
contrast SW quarter has been sterile, or virtually so.

PHASING

Perhaps 8505 ② and shallow ③ come down into  
8533 in SE quadrant, as does 8506. But  
8505 ③ and F 8507 come down directly onto  
bedrock and cut 8533.

approx  
15cm depth  
from top of  
8505  
Top of layer 3

no = chipmunk

Possibly  
8505

Bedrock

REMAINS OF LAYER 2  
area of  
small round  
stones and  
chips

SAME LEVEL

PLAN 3 E

SEE 8504

CH 28

P2 Plan 3K

1:20

Feature

2m

UNEXCAVATED TO L3 level  
SECTION A

8507

J. Miller

2-2-1988

Lower Level

Fairly flat lying rock  
Possibly bedrock 8533

00E  
70N