

CH 88

CONTEXT F 8518 ①

CUTTING P2 CO-ORDINATES: East 70 North 80

DATE EXPOSED 26.7.88 DATE COMPLETED

DESCRIPTION Medium stones vertically and at edge set in orange brown v. fine sandy silt. Maybe a pit - edges defined by slightly sloping stones coming down into the feature from the flat bedded rock around about.

MAX. WIDTH AND DIRECTION 1.50 M N-S

MAX. LENGTH AND DIRECTION 2.20 M W-E

MAX. DEPTH/HEIGHT THICKNESS Overall depth of feature 0.40 M 0.15 M

OVERLIES

OVERLAIN BY 8501 8165 8162^{N.B.} This actually goes over a filling which probably predates 8518 and into which 8518 was cut

CUTS 8561 8557

CUT BY 8162?

ABUTS OR CONTIGUOUS WITH 8519

PLANS No. 36^{1:20} Overlay to plan 3 SECTIONS No. 3 E 3D

PHOTO: B/W COL. NEG. NOS.

SAMPLE Type: Nos.

EXCAVATOR

RECORDER

Tim

ASSOCIATED FEATURES

ASSOCIATED FINDS Burnt bone

COMMENT Pro sketch plan Goes top beneath hearth 8162 found in 1987 - hearth presumably cut into 8518

unfortunately no N-S section was left to show general rubble and the way the stones at the edge sloped into the feature.

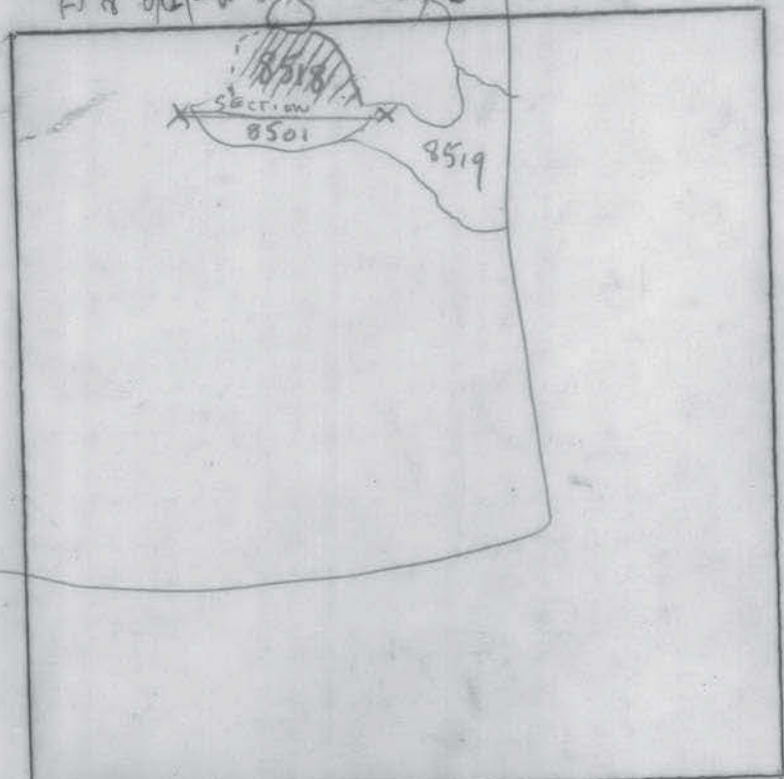
PHASING 1-8-88 Possible posthole at top of 8518 ② after removal of south side of 8518 ①.

8-8-88 8518 + 8519 should probably be considered one feature

F 8501
8518
Overlay



SSC 65N



SECTION
8501
8518

8519

8162

After removal

8165

8501

Shows top of

8518

Date
24-7-88

Plan 3B

1-20-88

3B

2K

2

CH 88

CONTEXT F 8518 (2)

CUTTING P2 CO-ORDINATES: East 70 North 80

DATE EXPOSED 27.7-88 DATE COMPLETED

DESCRIPTION

Bright orange-brown silty sand with many large and medium stones set in it mostly orientated W-E, although ones at other angles are found. Few verticals mostly flat or slightly on edge.

MAX. WIDTH AND DIRECTION See 8518

MAX. LENGTH AND DIRECTION See 8518

MAX. DEPTH/HEIGHT THICKNESS 0.15M

OVERLIES 8534

OVERLAIN BY 8518 (1)

CUTS

CUT BY 8534? 8543

ABUTS OR CONTIGUOUS WITH 8519 (2) See 8557

PLANS No. SECTIONS No. SECTION 3E

PHOTO: B/W COL. NEG. NOS.

SAMPLE Type: Nos.

EXCAVATOR Frankie Juanco

RECORDER Tim

ASSOCIATED FEATURES

ASSOCIATED FINDS charcoal bone. But very few finds

COMMENT Possibly section is in the wrong place, thus we cut through the sides of the feature while following the section? see 8518 section 1

2-8-88 PHASING From the evidence of Juanco digging the South side of 8518 its possible he has found a posthole (P.T.O.) maybe this whole feature is a series of postholes (see 8519 plan overlays for a similar pattern) and we missed seeing the divisions of natural bedrock between each posthole when we initially ~~excavated~~ excavated the N. side of 8518. Therefore there is no plan for this feature between plan 36 and 8518 (3)

N
S
50 cm
100 cm below surface of 85187
gingery-brown soil fill
Stones down either side

WEST side has a convincing edge at top

Seen from top

2.888
possible interpretation of 8518

P2 as at

Q = 8.88.

Definite posture

Probable

Possible

NE quarter
792

Sketch plan
of post
distribution
in diox
8518/8519

5E
5W

CH 88

CONTEXT F 8518 ^{Layer} (3)

CUTTING ^{P2} CO-ORDINATES: East..... North.....

DATE EXPOSED ⁸⁻⁸⁻⁸⁸ DATE COMPLETED

DESCRIPTION

Orange brown sandy silt with large
+ medium stones lying in it at various
angles.

MAX. WIDTH AND DIRECTION

MAX. LENGTH AND DIRECTION

MAX. DEPTH/HEIGHT THICKNESS 0.10m

OVERLIES Bedrock

OVERLAIN BY

CUTS

CUT BY 8534

ABUTS OR CONTIGUOUS WITH

PLANS No. ^{at back of 8519 @ C. sheet} 3C, 3F, 3J SECTIONS No. 3E, 3D

PHOTO: B/W COL. NEG. NOS.

SAMPLE Type: Soil Nos.

EXCAVATOR

RECORDER Tim

ASSOCIATED FEATURES

ASSOCIATED FINDS

COMMENT

Cut by posthole 8534 at eastern end of 8518
(almost 8519).

PHASING