

CH 89

CONTEXT F 9238

CUTTING Q2 CO-ORDINATES: East 1.38 North 5.68

DATE EXPOSED 5-9-89 DATE COMPLETED

DESCRIPTION area of acetates & burning within 9227

MAX. WIDTH AND DIRECTION 0.25m N-S

MAX. LENGTH AND DIRECTION 0.40m E-W

MAX. DEPTH/HEIGHT THICKNESS 0.30m

OVERLIES

OVERLAIN BY

CUTS 9227

CUT BY

ABUTS OR CONTIGUOUS WITH

PLANS No. SECTIONS No.

PHOTO: B/W COL. NEG. NOS.

SAMPLE Type: Snail Nos.

EXCAVATOR Dick

RECORDER UMW

ASSOCIATED FEATURES

ASSOCIATED FINDS charcoal, burnt bone, blue liss, pot.

COMMENT Possible post hole.

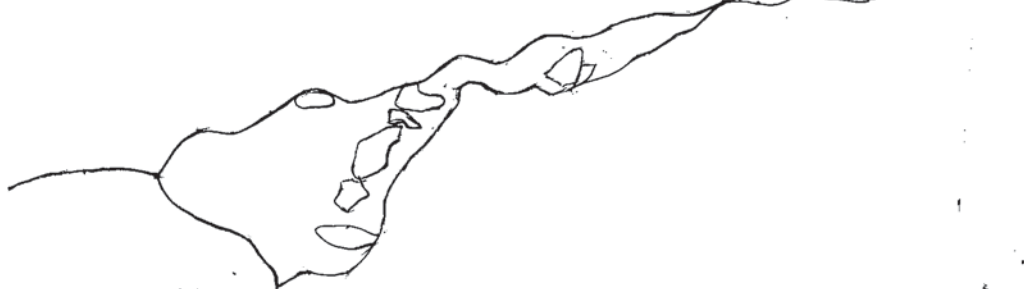
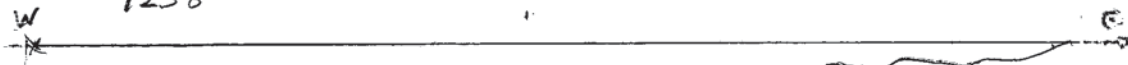
PHASING

Q2

CH 89 6-8-89 P23 Section 1:10

W = E 0.80
N 5.04
E = E 2.27
N 5.22

9238



Q2

CH 89 6/8/89

E = E 2.21
N 5.13
W = E 0.76
N 4.97

Profile 9238

1:10

RICHARD CHENNEL



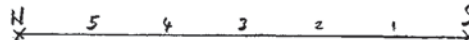
Richard Chenne

Q2

CH 89

N = E 1.26 N 5.29
S = E 1.29 N 4.73

Profile 9238



Dick
6/8/89

1:10

