

CH

CONTEXT **F** 6386

CUTTING **W 95** CO-ORDINATES: East **3.1** North **2.2**

DATE EXPOSED DATE COMPLETED

DESCRIPTION **S-h?**

MAX. WIDTH AND DIRECTION **7 cm SW-NE**

MAX. LENGTH AND DIRECTION **9 cm SE-NW**

MAX. DEPTH/HEIGHT THICKNESS **6 cms**

OVERLIES

OVERLAIN BY **6201**

CUTS **G.B.**

CUT BY

ABUTS OR CONTIGUOUS WITH

PLANS No. **F** SECTIONS No.

PHOTO: B/W COL. NEG. NOS.

SAMPLE Type: Nos.

EXCAVATOR RECORDER

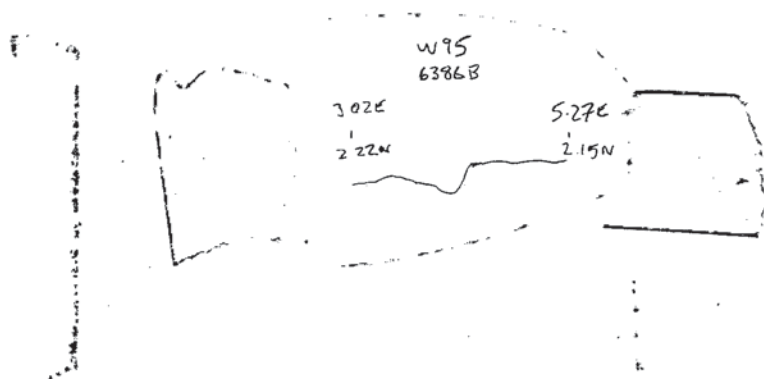
ASSOCIATED FEATURES

ASSOCIATED FINDS

COMMENT **Pos**

PHASING

SECTION:



NOTES/PHOTOGRAPHS: