

CH₄

TV

1 of 3

CONTEXT F 6205

CUTTING W96 CO-ORDINATES: East 5.6 North 9.95

DATE EXPOSED 27/7/84 DATE COMPLETED

DESCRIPTION Area of chipped small stones + some med stones with dk brown soil between;

MAX. WIDTH AND DIRECTION 1.6m NW - SE.

MAX. LENGTH AND DIRECTION 2m NE - SW.

MAX. DEPTH/HEIGHT THICKNESS

OVERLIES 6316, 6763

OVERLAIN BY 5769, 5663

CUTS 6249

CUT BY

ABUTS OR CONTIGUOUS WITH

PLANS No. overlapped, 4 SECTIONS No. 820

PHOTO: B/W COL. NEG. NOS.

SAMPLE Type: Nos.

EXCAVATOR FDB

RECORDER DBH

ASSOCIATED FEATURES

ASSOCIATED FINDS ① pot (incl B.W.), Flint, Bone, B. Bone, B. tooth, Charcoal, B. Flint

② Bone, Flint, B. bone, Pot, Alien limestone, Slag x 1 B. Flint Tooth

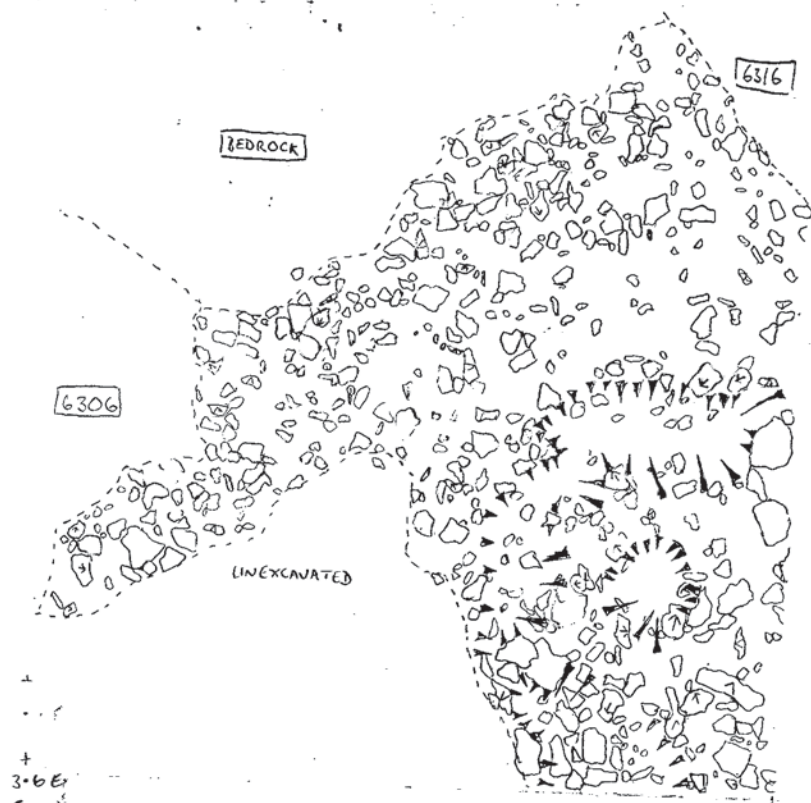
COMMENT } Area with entrance 5653? NO Antler Deers B. Flint Charcoal B. tooth

6205 ① = chipped small stones + some med stones.

6205 ② = med stones + some smaller stones, little dk brown soil

PHASING

SECTION:

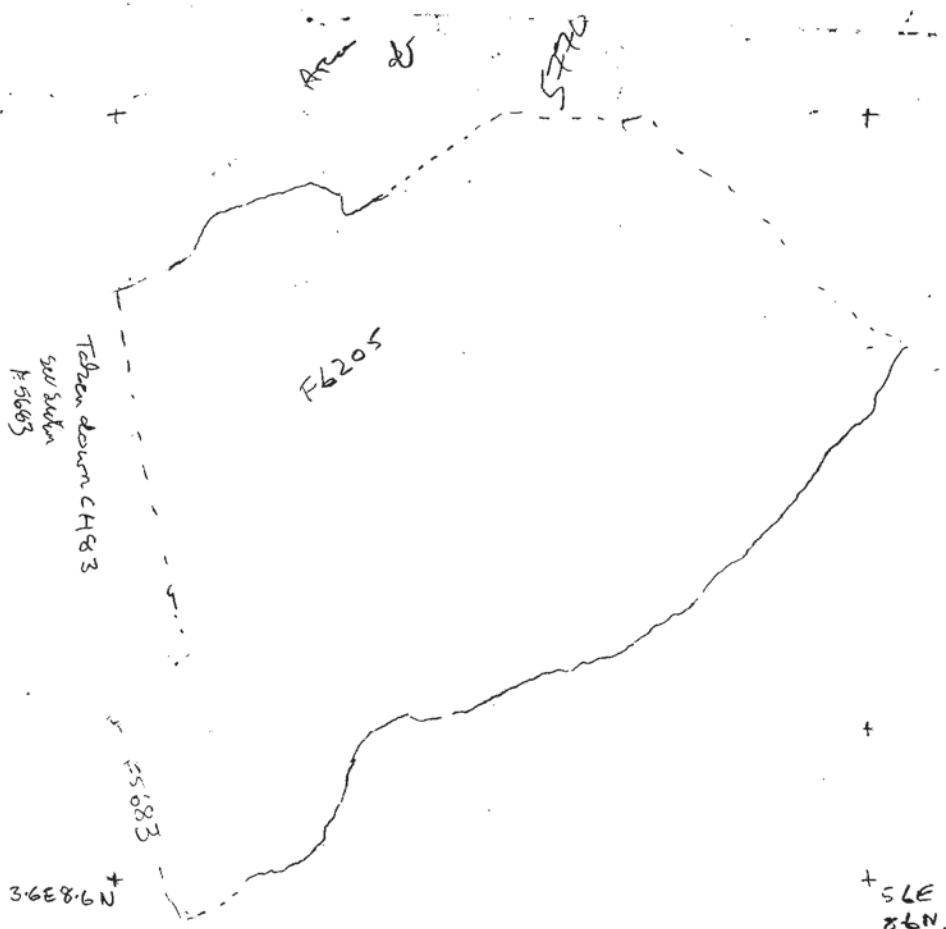


↑
N
1:20
F6249
OVERLAY 6?
27/8/84
FOZ

6

NOTES/PHOTOGRAPHS:

w96/w95 ↑ N
① overlay plan sketch
extent of
F6205
28/7/84
1:20
FOZ



W96/W95 section
 F6205 ② 15/8/84
 1:10 FOZ

same →
 24/8/84

3.54E
 8.55N

W96
 4.49E
 9.29N
 +

4.90E
 8.77N
 +

4.50E
 9.84N

W96
 6205 ②
 1:10
 SECTION
 FOZ
 22/8/84

W95
 5.76E
 0.40N
 +

W95
 4.27E 0.40N
 +

W96
 4.9E 9.15N
 +

F56205 1:20 FOZ
 28/7/84

2 of 3
 W96
 6205

3 or 3

W96

6205

(5)



N

1020

F6249

Overlay

Foz

26.8.84

Bedrock.

6316

6249 (already excavated)

6306

5.8E
8.8N

(SE)