

CH 84

TJ

CONTEXT F 6275

CUTTING w96 CO-ORDINATES: East 7.1 North 5.2

DATE EXPOSED 7/8/84 DATE COMPLETED

DESCRIPTION Staz Hole?

MAX. WIDTH AND DIRECTION 10ms N-S

MAX. LENGTH AND DIRECTION 12m E-W

MAX. DEPTH/HEIGHT THICKNESS 6ms

OVERLIES -

OVERLAIN BY 5723, 6208

CUTS cut by

CUT BY -

ABUTS OR CONTIGUOUS WITH -

PLANS No. Feature SECTIONS No. Section

PHOTO: B/W COL. NEG. NOS.

SAMPLE Type: Nos.

EXCAVATOR

RECORDER DBH

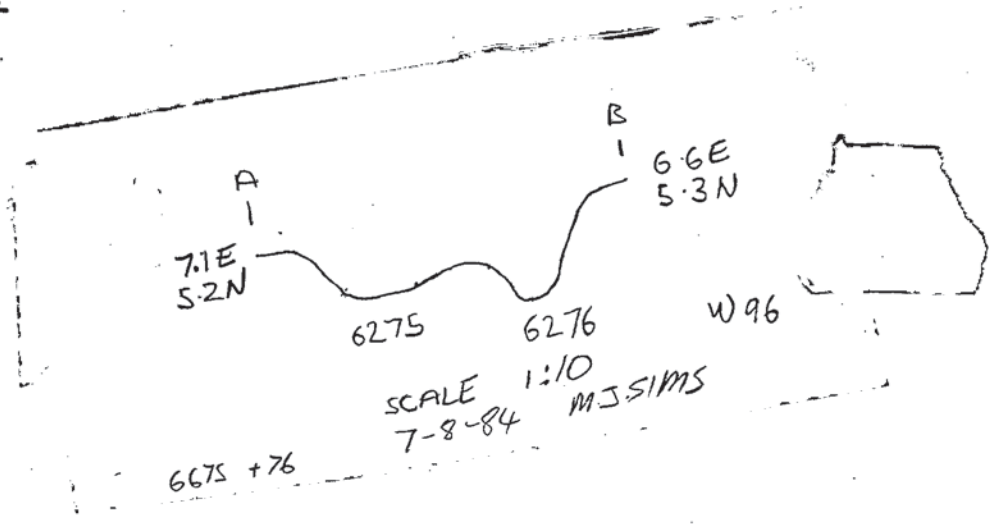
ASSOCIATED FEATURES 6272

ASSOCIATED FINDS

COMMENT Pos.

PHASING

SECTION:



NOTES/PHOTOGRAPHS: