

CH 84

CONTEXT F 6390 = 6254

CUTTING W96 CO-ORDINATES: East 87.0 North 876.32

DATE EXPOSED 27/8/84 DATE COMPLETED 27/8/84

DESCRIPTION S.h. filled + brown soil & chipples

MAX. WIDTH AND DIRECTION 13 cm SE-NW

MAX. LENGTH AND DIRECTION 15 cm SW-NE

MAX. DEPTH/HEIGHT THICKNESS 11 cm

OVERLIES

OVERLAIN BY 5723

CUTS Full bedrock

CUT BY

ABUTS OR CONTIGUOUS WITH

PLANS No. F SECTIONS No. Profile

PHOTO: B/W COL. NEG. NOS.

SAMPLE Type: Nos.

EXCAVATOR William

RECORDER SMB

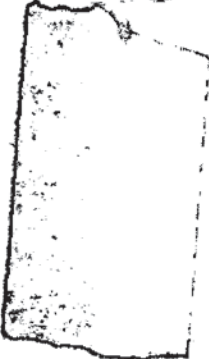
ASSOCIATED FEATURES

ASSOCIATED FINDS

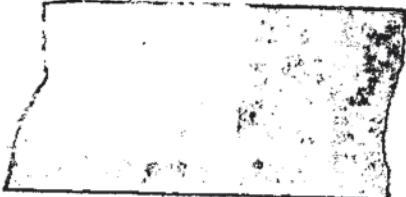
COMMENT Pos.

PHASING

SECTION:



Profile of F6390 Scale 1:10  
27. 8. 84 W.H. NEWNHAM C.  
6.90 E / 6.20 W  
NE 7.20 E / 6.44 N



NOTES/PHOTOGRAPHS: