

SITE CH 85 CONTEXT 6930

CUTTING X94 4E/S-SN

DATE EXPOSED 30/7/85 DATE COMPLETED

DESCRIPTION Linear patch of relatively stone free chippie, heavily burnt. Runs E/W. Excavated out into slot with fill of brown sticky clay loam

MAX. WIDTH AND DIRECTION 30 cm N/S

MAX. LENGTH AND DIRECTION 190 cm E/W (Westward extent uncertain)

MAX. DEPTH/HEIGHT THICKNESS 20 cm

OVERLIES 6933

OVERLAIN BY 6915

CUTS

CUT BY

ABUTS OR CONTIGUOUS WITH

PLANS (4) SECTIONS (11), (15)

PHTO : B/W COL. NEG. NOS.

SAMPLE (35) (36) (43) SNAIL, (41) CHEM, (42) SOIL

EXCAVATOR JT/Lid Gandy RECORDER JT.

ASSOCIATED FEATURES 6929, 6931

ASSOCIATED FINDS

COMMENT Part of ? timber structure with post 6929 and linear feature 6931. Considerably more stony to the east, perhaps indicating post settings?

These features (6930, 6931, 6929) are cut into the brecciating material of 6933 and sealed by the collapse of the bank, but their relationship to the bank itself is unclear. Western end cut by sondage.

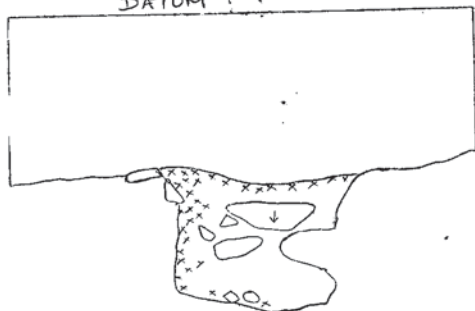
CH 85 X94 SECTION ⑪

JST 3 AUGUST 1985

3.2 E/
5.8 N

EAST FACING
DATUM

3.1 E/
5.2 N



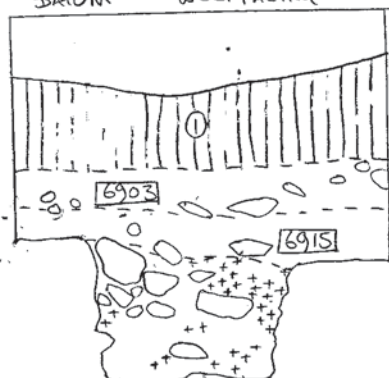
SLOT 6930

2.1 E/
5.5 N

DATUM

WEST FACING

2.2 E/
5.9 N



SECTION IN
CUTTING
EDGE

Main fill is of sticky brown
clay loam.

x = chptle

+ = chptle

X94 Tularis cutting

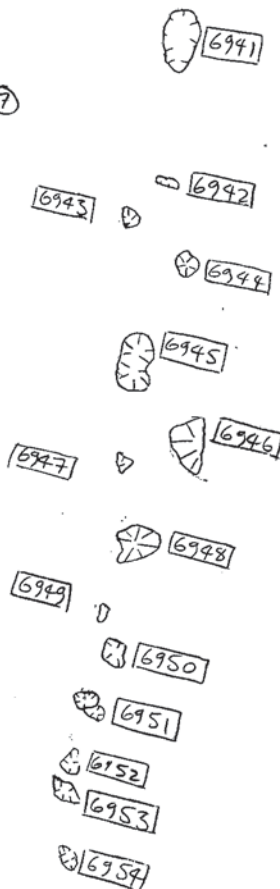
C.S.H.

9/8/85

CH 85

Overlay for Feature plan ⑦
showing "stake-holes" in
bottom of 6930

N ←



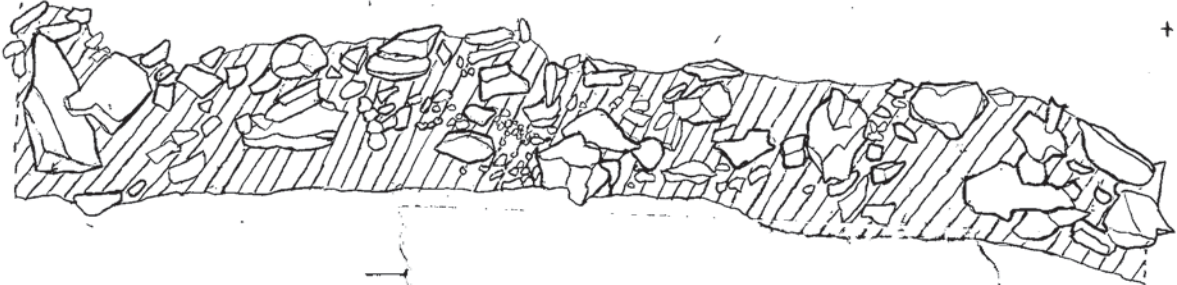
2 of 2

6930

CUTTING X94

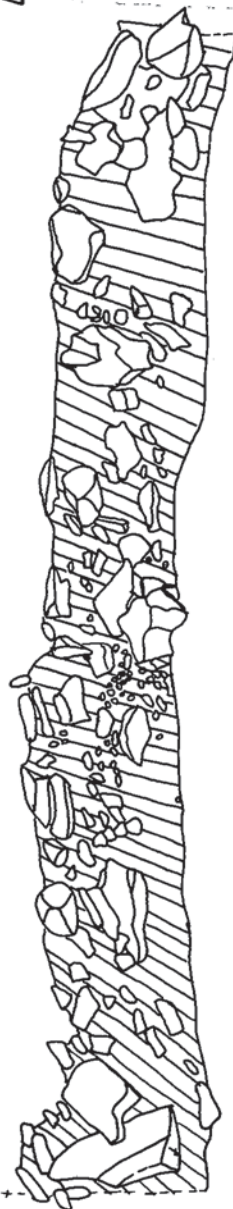
C.H. 85 1:10 C.S.H. 6/8/85 SECTION 15
X94 Julian's cutting Long section 6930

5.38 N +
4.68 E



+ 5.60 N
4.30 E

+ 5.68 N
4.30 E



FEATURE PLAN 15 6930 (LONG SECTION)

5.38 N
4.68 E