

CH 84

TV

CONTEXT F 6357

CUTTING X96 CO-ORDINATES: East North 300 6-1 818 2-6

DATE EXPOSED DATE COMPLETED

DESCRIPTION S H - filled + brown soil & chipples

MAX. WIDTH AND DIRECTION 10m E-W

MAX. LENGTH AND DIRECTION 25m N-S

MAX. DEPTH/HEIGHT THICKNESS 15m

OVERLIES

OVERLAIN BY 6126

CUTS G B

CUT BY

ABUTS OR CONTIGUOUS WITH

PLANS No. F SECTIONS No.

PHOTO: B/W COL. NEG. NOS.

SAMPLE Type: Nos.

EXCAVATOR

RECORDER DBH

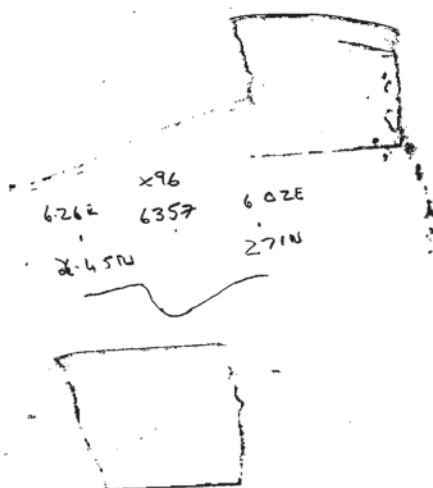
ASSOCIATED FEATURES

ASSOCIATED FINDS

COMMENT ? CONSTRUCTIONAL for 6126 (JULY'S BRIDGE) Pos.

PHASING

SECTION:



NOTES/PHOTOGRAPHS: