

CH 86

CONTEXT F 66345

CUTTING X96 CO-ORDINATES: East 7.1 North 3.8

DATE EXPOSED DATE COMPLETED

DESCRIPTION S.h ? - filled + brown soil & chippie

MAX. WIDTH AND DIRECTION 18 cm W-E

MAX. LENGTH AND DIRECTION 24 cm N-S

MAX. DEPTH/HEIGHT THICKNESS 10 cms

OVERLIES

OVERLAIN BY 6228

CUTS G.B.

CUT BY

ABUTS OR CONTIGUOUS WITH

PLANS No. P SECTIONS No.

PHOTO: B/W COL. NEG. NOS.

SAMPLE Type: Nos.

EXCAVATOR

RECORDER

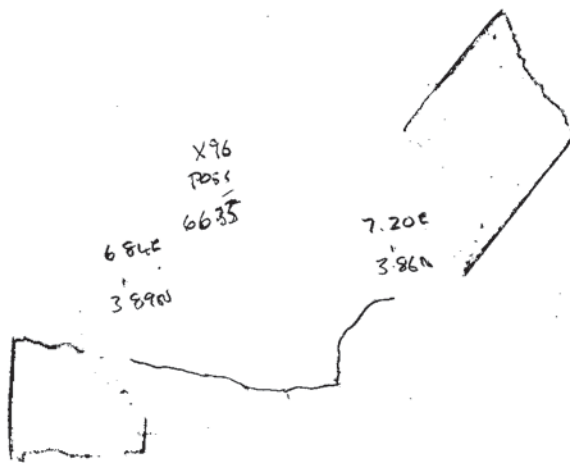
ASSOCIATED FEATURES

ASSOCIATED FINDS

COMMENT Pos

PHASING

SECTION:



NOTES/PHOTOGRAPHS: