

CH 84

CONTEXT F 6654

CUTTING X96 CO-ORDINATES: East 5.9 North 3.7

DATE EXPOSED DATE COMPLETED

DESCRIPTION Sh.

MAX. WIDTH AND DIRECTION 10 cm SE-NW

MAX. LENGTH AND DIRECTION 21 cm SW-NE

MAX. DEPTH/HEIGHT THICKNESS 6 cm

OVERLIES

OVERLAIN BY 6228

CUTS G.B.

CUT BY

ABUTS OR CONTIGUOUS WITH

PLANS No. F SECTIONS No.

PHOTO: B/W COL. NEG. NOS.

SAMPLE Type: Nos.

EXCAVATOR

RECORDER

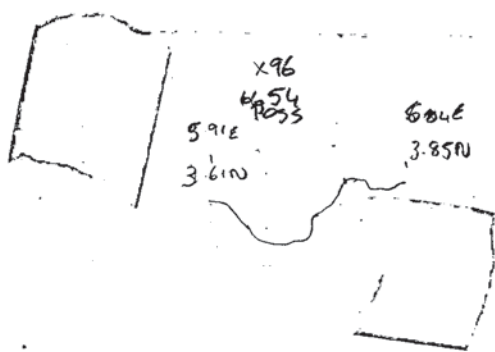
ASSOCIATED FEATURES

ASSOCIATED FINDS

COMMENT Pos

PHASING

SECTION:



NOTES/PHOTOGRAPHS: