

CH 84

CONTEXT F 6133

CUTTING 297 CO-ORDINATES: East 4.95 North 9.45

DATE EXPOSED 20/8/84 DATE COMPLETED 20/8/84

DESCRIPTION

S.H.

MAX. WIDTH AND DIRECTION 20cm E-W

MAX. LENGTH AND DIRECTION 12cm N-S

MAX. DEPTH/HEIGHT THICKNESS 18cm

OVERLIES 6118

OVERLAIN BY 6128

CUTS 6118

CUT BY

ABUTS OR CONTIGUOUS WITH

PLANS No. 6128 SECTIONS No.

PHOTO: B/W COL. NEG. NOS.

SAMPLE Type: Nos.

EXCAVATOR RECORDER

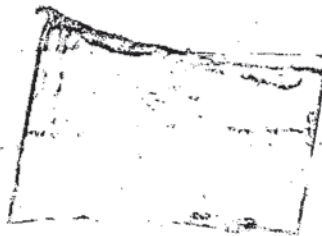
ASSOCIATED FEATURES 6134, 6135 See 6120

ASSOCIATED FINDS

COMMENT S.H. was filled with a brown earth

PHASING

SECTION:

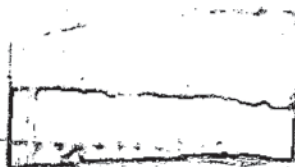


F6133 profile  
Sq. 2097  
Scale 1:10

Ella Leibowitz  
21.8.84

4.90 East  
9.80 North  
x

4.90 East  
9.62 North  
x



NOTES/PHOTOGRAPHS: