

CH 84

CONTEXT

F

6151

CUTTING

CO-ORDINATES:

East

North

DATE EXPOSED

DATE COMPLETED

DESCRIPTION

S11

MAX. WIDTH AND DIRECTION

10cm N-S

MAX. LENGTH AND DIRECTION

11cm E-W

MAX. DEPTH/HEIGHT THICKNESS

9cm

OVERLIES

OVERLAIN BY

6101

CUTS

6118

CUT BY

ABUTS OR CONTIGUOUS WITH

PLANS

No.

feature

SECTIONS

No.

see over

PHOTO: B/W

COL.

NEG.

NOS.

SAMPLE

Type:

Nos.

EXCAVATOR

Lucy

RECORDER

JP

ASSOCIATED FEATURES

6152, 6153, 6154, 6155, 6156, 6157, 6158, 6159, 6160, 6169, 6161, 6162, 6182, 6183, 6184, 6185, 6186, 6189

ASSOCIATED FINDS

COMMENT

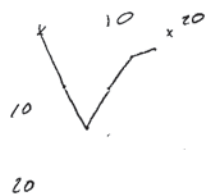
The above postholes form a semi-circle. They are all very close together suggesting stakes for a house rather than a fence.

PHASING

la. These stake holes are sealed by the Neolithic bank (6101) possibly mesolithic.

SECTION:

4.89E 4.93E
5.76N 5.60N



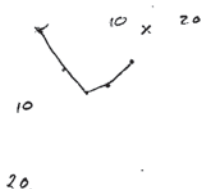
X 97
Scale 1:10
F6182
Lucy McShane
27/8/84

5.45E 5.57E
6.23N 6.01N



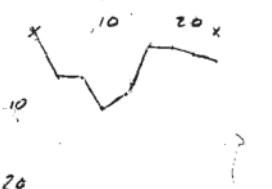
X 97
Scale 1:10
F6189
Lucy McShane
27/8/84

4.87E 4.95E
5.95N 5.82N



X 97
Scale 1:10
F6183
Lucy McShane
27/8/84

5.90E 5.88E
6.25N 6.05N

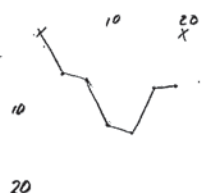


X 97
Scale 1:10
F6189
Lucy McShane
27/8/84

alc
F6184 McShane
27/8/84

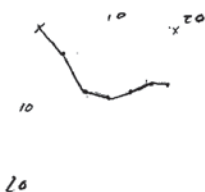
NOTES/PHOTOGRAPHS:

5.76N 5.72N



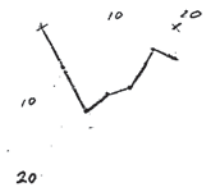
X 97
Scale 1:10
F6184
Lucy McShane
27/8/84

4.79E 4.65E
5.81N 5.84N



X 97
Scale 1:10
F6185
Lucy McShane
27/8/84

4.46E 4.35E
5.77N 5.67N



X 97
Scale 1:10
F6186
Lucy McShane
27/8/84

X 97

X 97

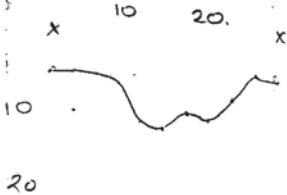
Scale 1:10

F1651

Lucy McShane
25/8/84

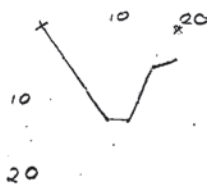
4.91E
5.07N

4.96E
5.35N



5.84E
5.57N

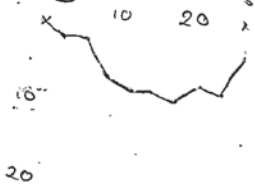
5.86E
5.74N



X 97
Scale 1:10
F6156
Lucy McShane
26/8/84

5.11E
5.13N

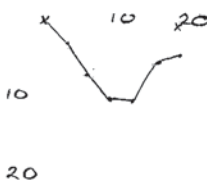
5.17E
5.60N



X 97
Scale 1:10
F1652
Lucy McShane
25/8/84

5.97E
5.54N

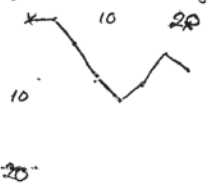
5.98E
5.68N



X 97
Scale 1:10
F6157
Lucy McShane
26/8/84

5.30E
5.53N

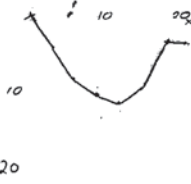
5.33E
5.75N



X 97
Scale 1:10
F1653
Lucy McShane
25/8/84

5.26E
5.85N

5.30E
5.66N



X 97
Scale 1:10
F6158
Lucy McShane
26/8/84

5.44E
5.53N

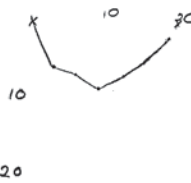
5.47E
5.71N



X 97
Scale 1:10
F1654
Lucy McShane
25/8/84

5.58E
5.85N

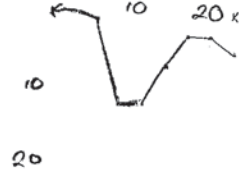
5.59E
5.66N



X 97
Scale 1:10
F6159
Lucy McShane
26/8/84

5.73E
5.59N

5.60E
5.76N



X 97
Scale 1:10
F1655
Lucy McShane
25/8/84

5.85E 5.85E
5.90N 5.76N



20

X 97
Scale 1:10
F6160
Wm. McShane
26/8/84

6.84E 6.75E
5.63N 5.53N



20

X 97
Scale 1:10
F6161
Wm. McShane
26/8/84

6.99E 7.01E
5.54N 5.38N



20

X 97
Scale 1:10
F6162
Wm. McShane
26/8/84