

CH 84

CONTEXT F 6041...

CUTTING ~~Z 94~~ Z 94- CO-ORDINATES: East 4.0 North 4.0'

DATE EXPOSED 10/8/84 DATE COMPLETED

DESCRIPTION

Verticle Stones in a dark brown soil matrix

MAX. WIDTH AND DIRECTION 20cms dia

MAX. LENGTH AND DIRECTION

MAX. DEPTH/HEIGHT THICKNESS 18cms

OVERLIES S/Rock

OVERLAIN BY 6045

CUTS 5542

CUT BY

ABUTS OR CONTIGUOUS WITH

PLANS No. overlay for 2 + feature SECTIONS No.

PHOTO: B/W COL NEG NOS.

SAMPLE Type: Snail / Clam Nos.

EXCAVATOR

Daddy & Anna Stanford

RECORDER

JG

ASSOCIATED FEATURES

ASSOCIATED FINDS

COMMENT

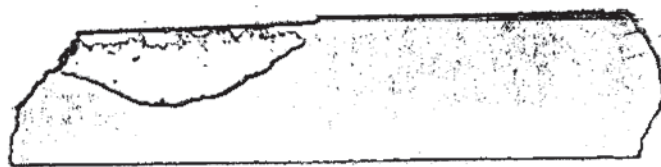
Posthole!
carved out

This hole was contaminated (because not seen till last minute JG) hence no sampling

(21/8/84 - Post hole redefined earlier excavation had only revealed the post pipe - redug by Anna Stanford & sampled

PHASING

SECTION:

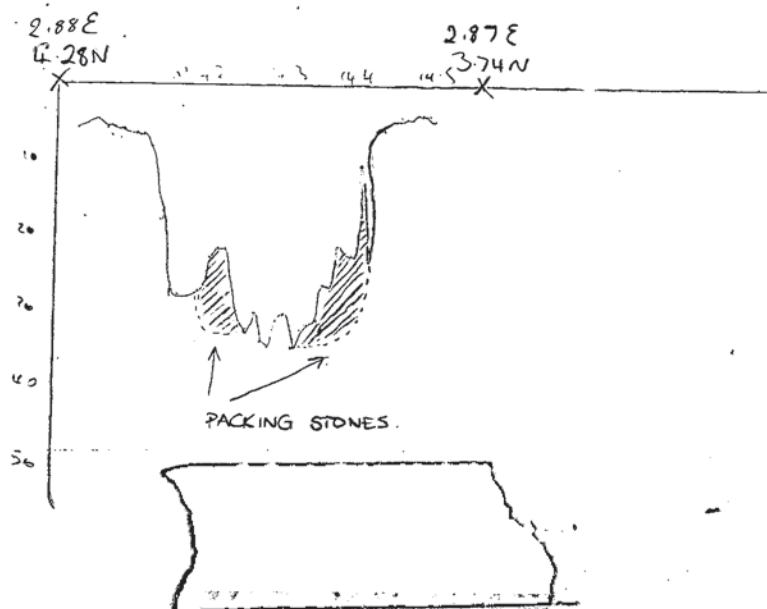


SCALE 1:10

K. Collier

C.H. 84

West facing section through post hole #6041



NOTES/PHOTOGRAPHS: